

FACILITIES ADVISORY COMMITTEE

January 18, 2024 | 6:00 PM | Komachin Middle School

AGENDA



- | | |
|-----------------------------|-------------------------|
| 1. Welcome | Troy Oliver |
| 2. Overview of Levies | Troy Oliver/Amy Blondin |
| 3. NTPS Construction Update | Tony Matiatos |
| 4. Tour of KMS | All |

Next meeting: Thursday, March 7, 2024 | 6:00 PM | Location TBD





Facilities Advisory Committee Meeting Notes

January 18, 2024

Komachin Middle School

6:00 PM

Welcome:

Troy Oliver, Assistant Superintendent of Operations welcomed attendees and asked everyone to introduce themselves.

Attendees: Troy Oliver, Amanda Garcia, Angie DeAguiar, Cyrus Overbey, Dan Youkoski, Deb Clemens, Dusti Trickle, Haley Ortega, James Murray, James Stanton, Jason Chapman, Karen Edwards, Meghan Vu, Nate Grygorcewicz, Ray Nelson, Rebecca Midles, Ruth Weigelt, Scott McCormick, Tiffany Sevruck, Brent Lancaster, and Heather Larson

Overview of Levies

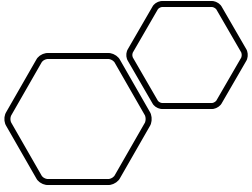
Troy Oliver shared 2 videos about the upcoming levy propositions. One video covered the Replacement education programs and operations levy (EP&O) and the other video was about the Capital Levy for safety, technology, and facilities improvement. Both videos are posted on the NTPS website for anyone to view.

NTPS Construction Update

Tony Matiatos, Director of Construction & Design shared construction updates and photos showing ongoing work happening at River Ridge High School, Komachin Middle School, and the Raj Manhas Activity Center (RMAC). Mr. Matiatos also discussed other projects including:

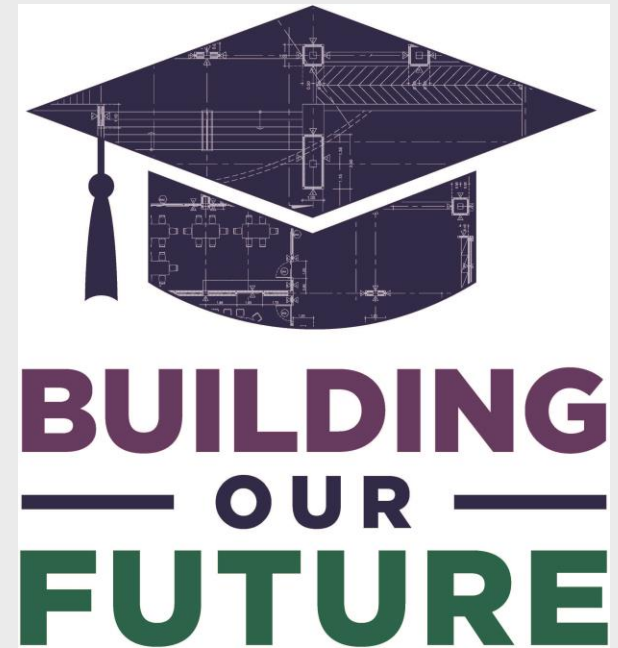
- Secure entrances at Mountain View Elementary and Meadows Elementary
- Gym roof replacements at Lacey Elementary
- Mechanical upgrades at Meadows Elementary and Seven Oaks Elementary
- Lighting replacement at South Sound Stadium
- Early Learning Center TI at Seven Oaks Elementary
- Early Learning Center play area at Woodland Elementary
- Other miscellaneous projects such as fencing, gates, playgrounds, etc.

The meeting adjourned at 6:45 PM



Facility Advisory Committee

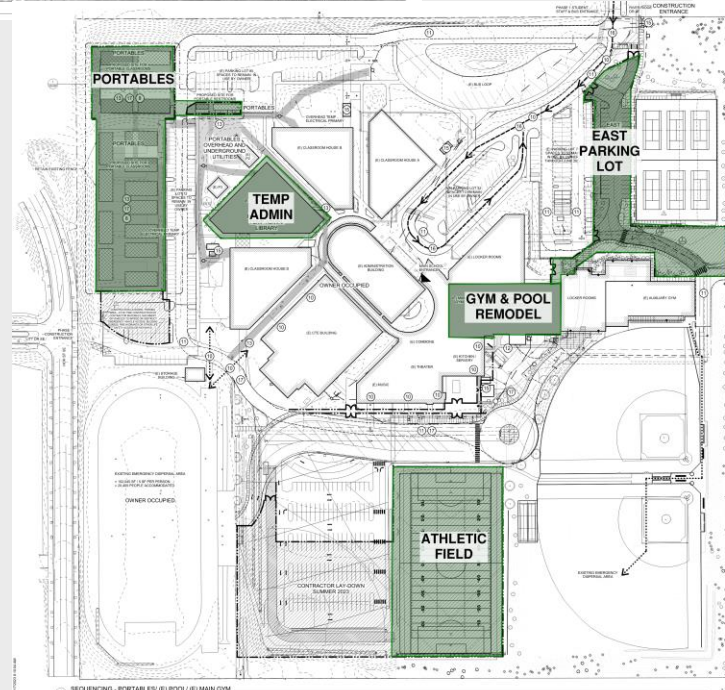
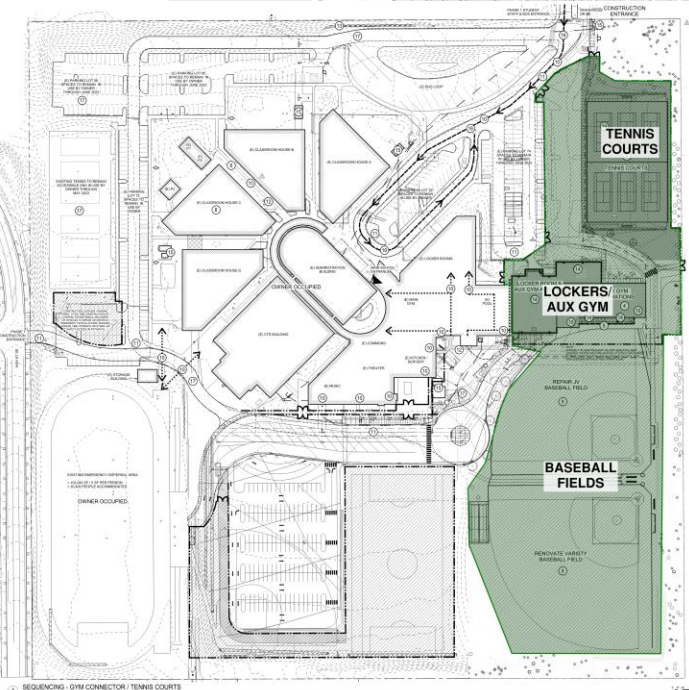
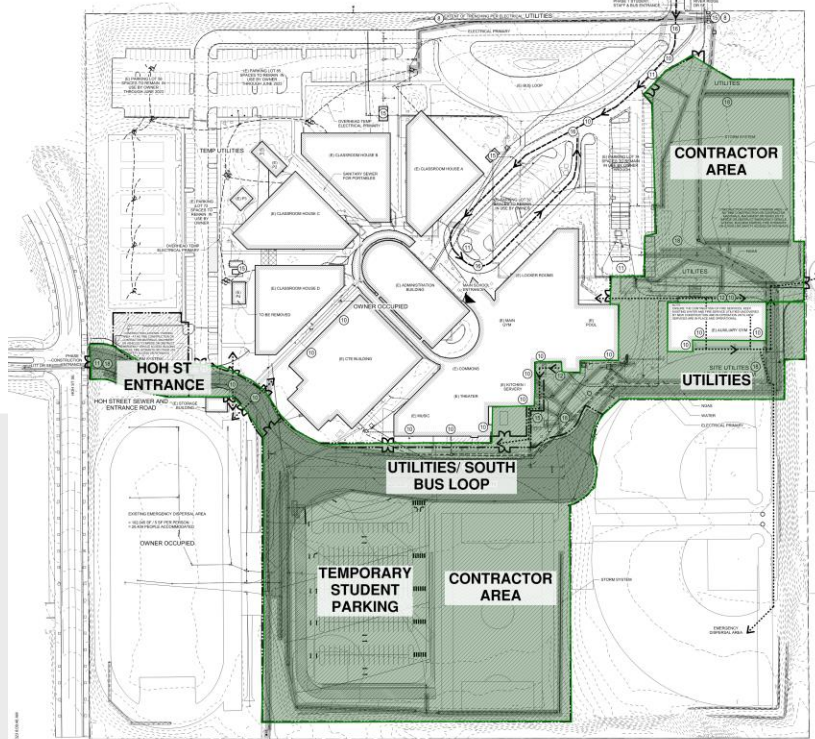
January 2024

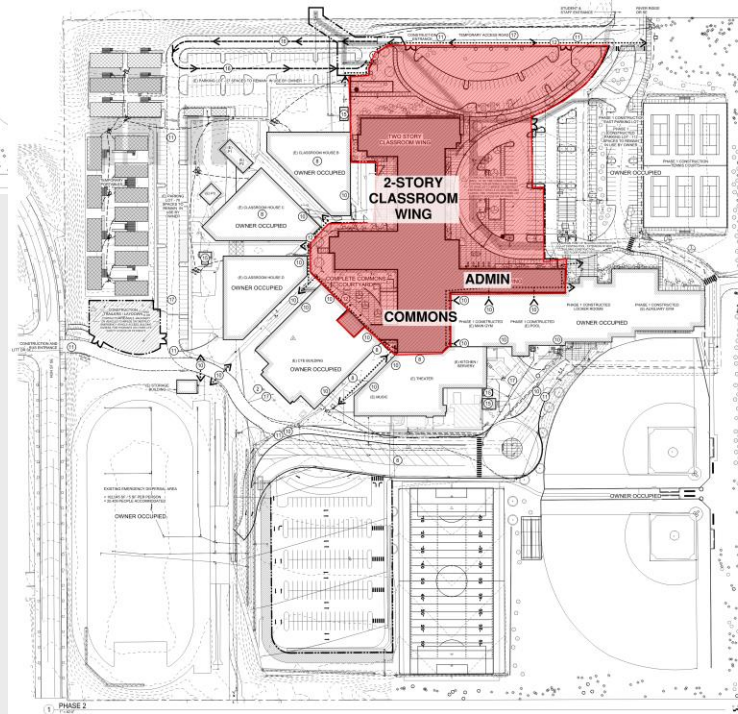
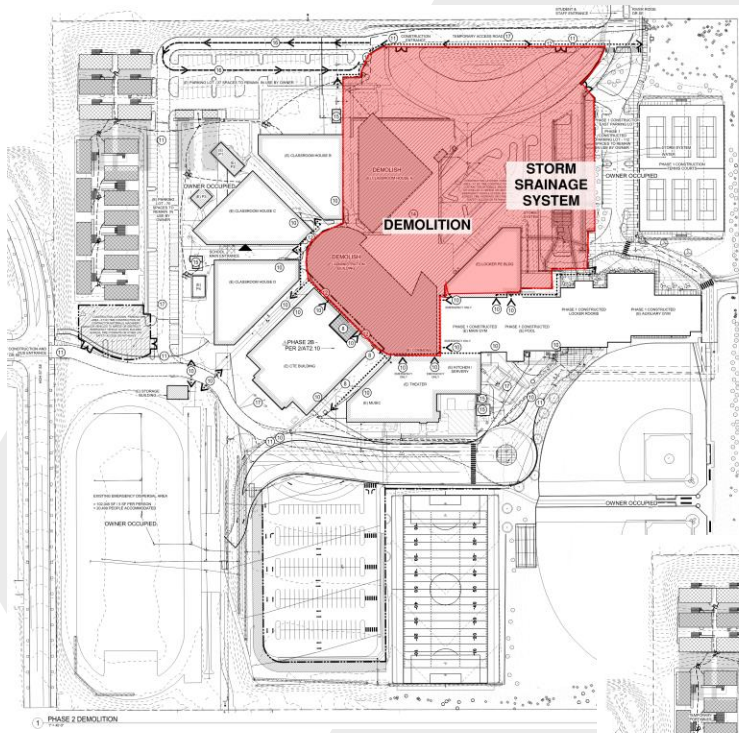


RIVER RIDGE HIGH SCHOOL

Phase 1: Completed October 2023

- New Hoh Street Access Road
- Reroute and Installation of New Utilities (Sewer, Power, Gas, Stormwater)
- New Athletic Locker Rooms and Weight Rooms
- New Phase 1 Bus Loop
- Temporary Parking
- New Tennis Court Constructed in New Location
- Aux Gym Improvements
- Portable Classrooms Placed on Site (17 buildings, 34 classrooms)
- Main Gym Bleachers Replaced
- Pool Mechanical and Electrical Replaced
- Northeast Parking Lot Constructed
- Temporary Admin Constructed in Bldg. C
- South Athletic Field Constructed (1 year grow period starts)





Phase 2: Fall 2023-Spring 2026

- Demolition of Admin Building
- Demolition of House A
- Demolition of Athletic & Weight Room Building
- New Bus Loop and East (front) Parking Lot Constructed
- Temporary Commons and Servedy Constructed
- New Administration and Classroom Addition Completed
- Renovation of Existing Bus Loop into New Front Parking Lot Completed
- New Kitchen Completed
- Commons Area Completed
- Commons Courtyard Completed
- South Bus Loop Completed
- Northeast Parking Lot Completed

North Thurston Public Schools
Construction and Design



River Ridge High School Construction Progress

December 26
2023

River Ridge High School Temp. Commons



River Ridge High School Temp. Servery



River Ridge High School Demolition – House “A” and Admin.



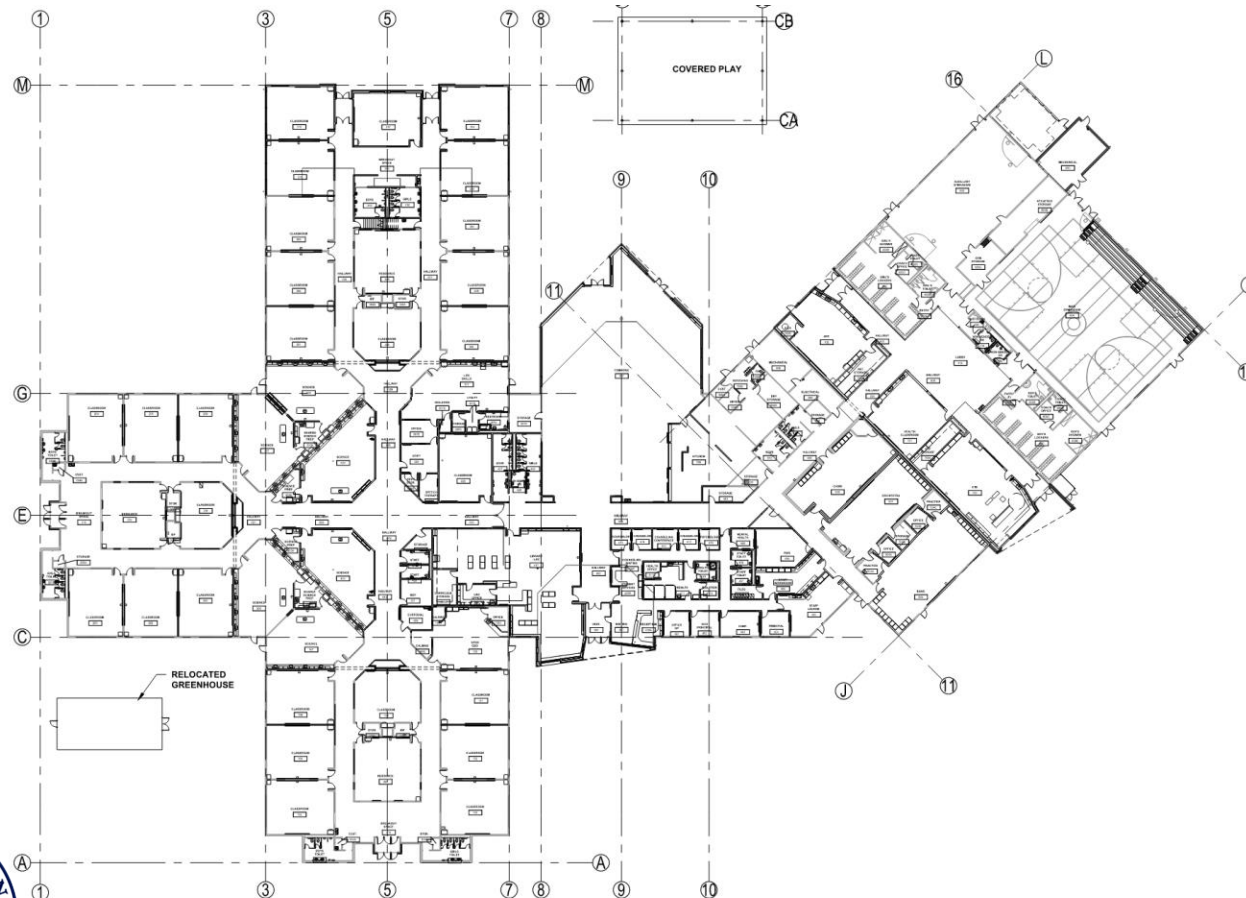
River Ridge High School Demolition – House “A” and Admin.



River Ridge High School Completed Modernization



Komachin Middle School Floor Plan



Phase 1 thru 3: Fall of 2023

- Reroute and Installation of New Utilities (Sewer, Power, Gas, Stormwater)
- Portables Placed On Site
- New Baseball/Playfields Completed
- Temporary Traffic Revisions
- Relocate Greenhouse
- Remodel: Gym, Music Area, Kitchen, Main Office, Library
- Enclose Breezeway for CTE and Art classrooms
- Remodel/Expand: Commons
- Remodel/Addition to Classroom Wings

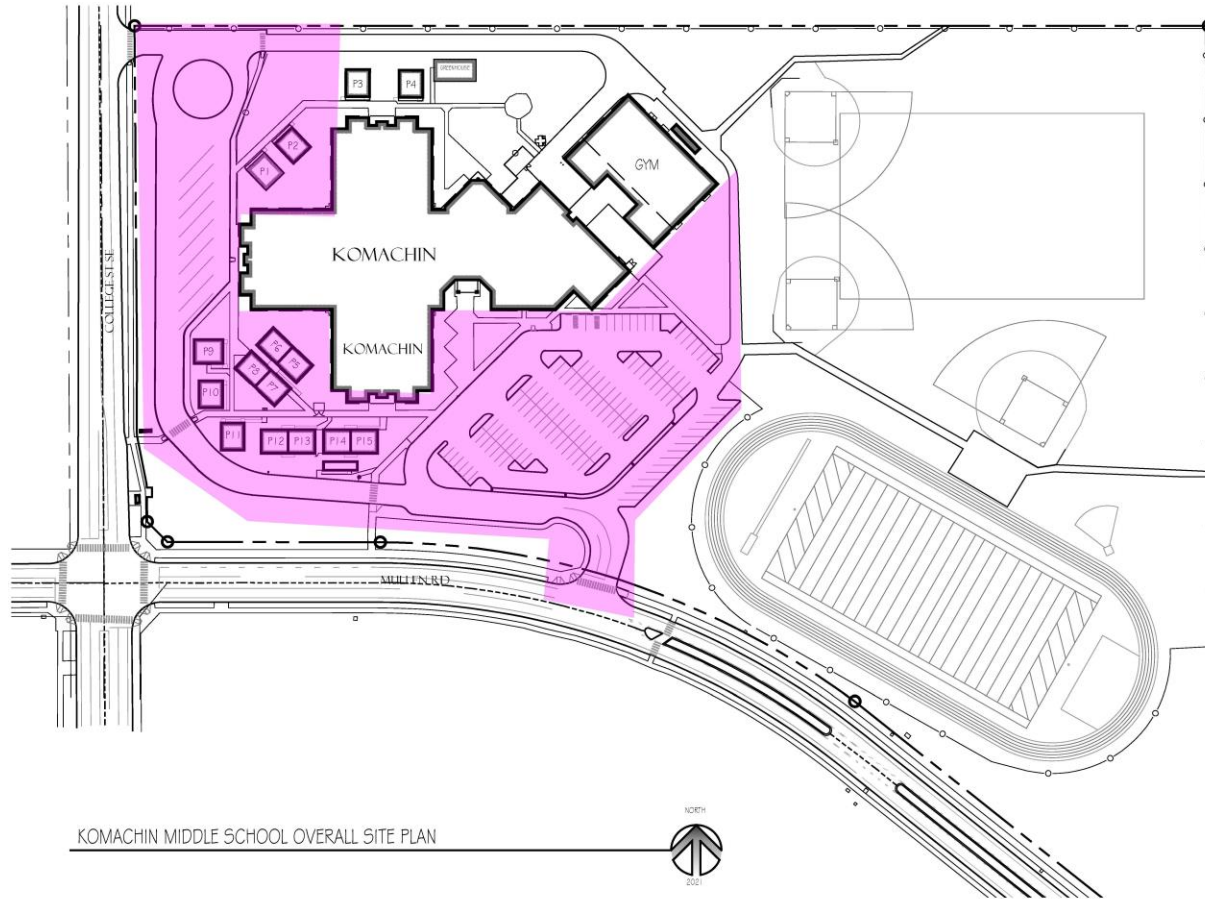
Komachin Middle School School Entry



Komachin Middle School Addition



Komachin Middle School Site Plan



Summer 2024

- Complete Installation of Green House
- Remove Portables
- Renovate Parking Lot and Bus Loop
- Complete Landscape / Hardscape

Komachin Middle School Ribbon Cutting

YOU ARE INVITED!

JOIN US TO CELEBRATE THE
KOMACHIN MIDDLE SCHOOL MODERNIZATION!

Komachin Middle School students are excited to share their new learning spaces with you! Come see our new secure entrance, music, art, and CTE classrooms, commons, kitchen, library, community entrance, and expanded gymnasium. This major modernization project will wrap up this summer with the removal of portable classrooms and a new bus loop – all possible thanks to voter support!

JANUARY 31 | 10:00 AM



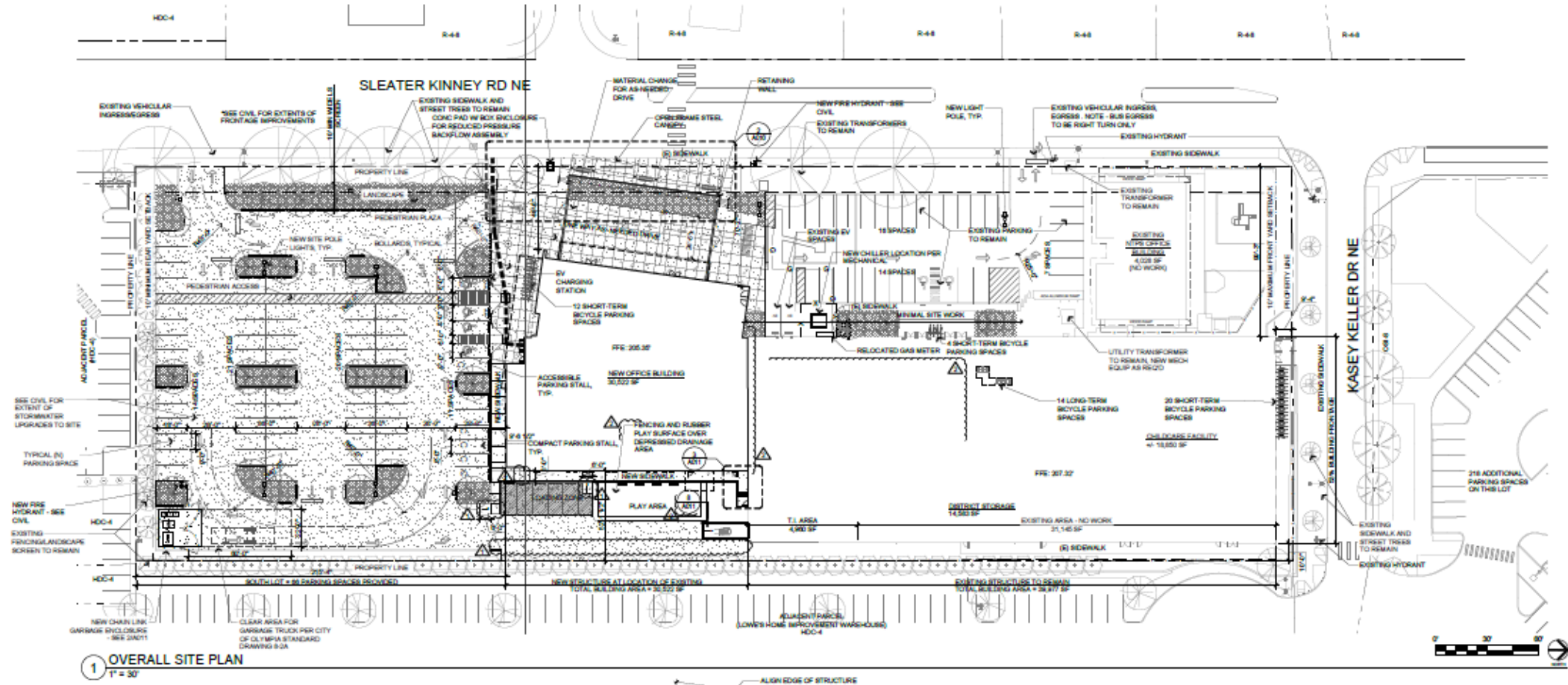
KOMACHIN MIDDLE SCHOOL
3650 College Street SE, Lacey



WWW.NTHURSTON.K12.WA.US/KOMACHIN

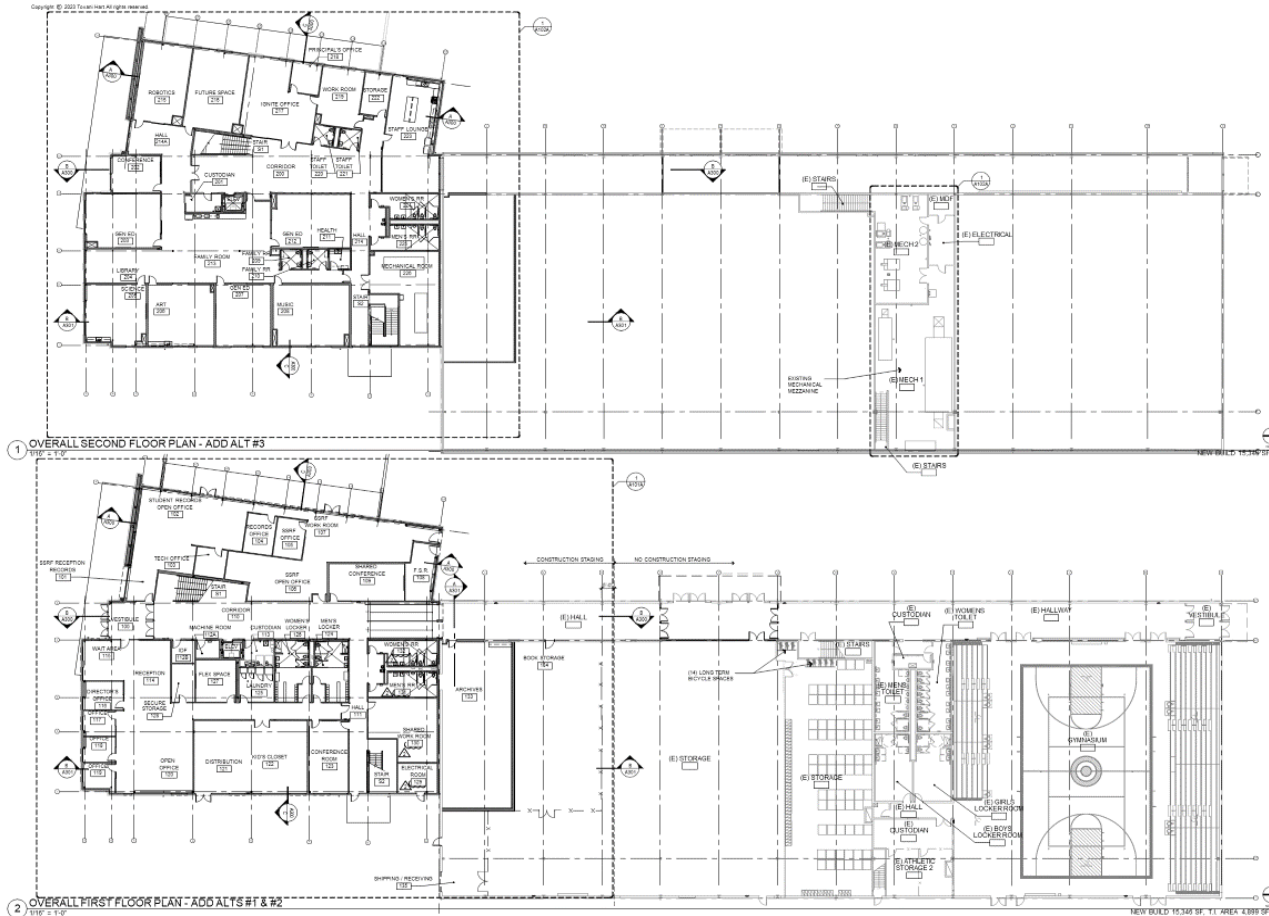


RMAC South Site Plan



RMAC South Floor Plan

- First Floor
 - Archives
 - FYR Center
 - South Sound Reading Foundation
 - Boys and Girl's Club
 - District Storage
- Second Floor
 - Ignite Program



RMAC South Tree Removal



RMC South Utilities/Fire riser



RMAC South Utilities



Meadows Elementary Secure Entry



Mountain View Elementary

Secure Entry



YCFC Programming

Program
NTPS YCFC
Date: 12/15/2023

Administration	No. Required	Room Utilization	Gross Area	Phase	Phase 1 Subtotal	Square Root	Roundnd Root	L&W
Administrative Offices								
Main Office	1	Primary	900	1	900	30	30.30'0"	
Principal's Office	1	Primary	240	1	240	15.49193	15.49 15'6"	
Admin. Asst. Office	1	Primary	120	1	120	10.95445	10.95 10'11"	
Asst. Principal	1	Primary	120	1	120	10.95445	10.95 10'11"	
Health Services	1	Primary	600	1	600	24.4949	24.49 24'6"	
Psychologist Office	1	Primary	180	1	180	13.41641	13.42 13'5"	
Administrative Work Room	1	Primary	600	1	600	24.4949	24.49 24'6"	
Conference Room	1	Primary	800	1	800	28.28427	28.28 28'3"	
Small Conference Room	2	Primary	400	1	800	20	20.20'0"	
Staff Lounge	1	Primary	800	1	800	28.28427	28.28 28'3"	
SLP/TOSA Offices	1	Primary	240	1	240	15.49193	15.49 15'6"	
Staff Changing Rooms	2	Primary	100	1	200	10	10.10'0"	
Staff/Adult Restrooms	1							
Subtotal					5600	74.83315	74.83 74'10"	
Early Learning Center								
Integrated Preschool								
Classroom	6	Primary	800	1	4800	28.28427	28.28 28'3"	
Classroom Storage	3	Primary	200	1	600	14.14214	14.14 14'2"	
Therapy/Observation	3	Primary	150	1	450	12.24745	12.25 12'3"	
ECEAP								
Classroom	2	Primary	800	1	1600	28.28427	28.28 28'3"	
Classroom Storage	1	Primary	200	1	200	14.14214	14.14 14'2"	
Therapy/Observation	1	Primary	100	1	100	10	10.10'0"	
Support & Shared Spaces								
ASD - Extended Day Program	1	Primary	800	1	800	28.28427	28.28 28'3"	
OTPT Therapy Room	1	Primary	800	1	800	28.28427	28.28 28'3"	
OTPT Office Area	1	Primary	400	1	400	20	20.20'0"	
OTPT Clinic Motor Skills Stor.	1	Primary	500	1	500	22.36068	22.36 22'4"	
Assessment Room	1	Primary	400	1	400	20	20.20'0"	
Activity Spaces								
Multi-Use Space	1	Primary		2				
Multi-Use Storage	1	Primary		2				
Covered Indoor Playcourt	2	Primary	1875	1	3750	43.30127	43.3 43'4"	
Playcourt Storage	2	Primary	400	1	800	20	20.20'0"	
Children's Restrooms	1	Primary	72			8.485281	8.49 8'6"	
Food Service								
Kitchen	1	Primary	1000			31.62278	31.62 31'7"	
Faculty Support Spaces								
Staff Work Room	2	Primary	400	1	800	20	20.20'0"	
Toilets	1	Primary						
Subtotal					16000			

Support Spaces	No. Required	Room Utilization	Gross Area	Phase	Phase 1 Subtotal
Maintenance					
Outdoor Storage	1	Primary	500	1	500
Receiving/Bldg Storage	1	Primary	500	1	500
Custodial Office	1	Primary	350	1	
Custodial Closets	4	Primary	150	1	600
Outdoor Play					
Storage	3	Primary	180	1	540
Restrooms	1	Primary			
Subtotal					2140
Partner Program - City of Lacey					
Subtotal					
Partner Program - Parks Dept.					
Subtotal					
Partner Program - Library					
Subtotal					
Partner Program - YMCA					
Subtotal					
Unassignable Area					
Restrooms	IR(EF)	Primary	80		IR(EF)
Circulation	0.25	Primary			5935
Walls	0.15	Primary			3561
Mechanical Room/MNF	0.15	Primary			3561
Electrical Room	0.10	Primary			2374
Subtotal					IR(EF)
Building Total					Phase 1 Subtotal
Gross Building Area					IR(EF)



In The Works:

Lacey Elementary – Gym Roof Replacement

Meadows and Seven Oaks Elementaries - Mechanical Upgrades

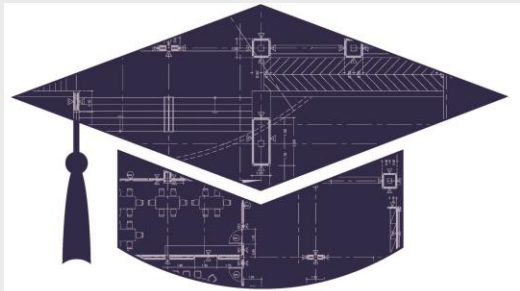
South Sound Stadium – Lighting Replacement

Seven Oaks Elementary - ELC TI

Woodland Elementary – ELC Play Area

Miscellaneous – Fence, Gates, Playgrounds, etc.





BUILDING
— OUR —
FUTURE

Questions?